



# INTRODUCTION OF LIUGONG COMPRESSOR COMPANY

Liugong(Liuzhou) Compressor Co., Ltd.



# Thanks for your choice

Committed to providing you systematic solutions



## Air Compressor

Diesel | Motor



# 目录 CONTENTS

**01** Introduction  
of Company

Liugong -Your reliable partner

**02** Product  
Features

Liugong -Your enriching helper

**03** Parameter&  
Application

Liugong -Your systematic solution provider



# Liugong-Your reliable partner

Timehonored brand



Timehonored Brand  
Worth Trusting

Liuzhou

set up

1958<sub>year</sub>

Guangxi Liugong Machinery Co. Ltd.  
Liuzhou United Repair Workshop



1958

1959

1960

1981

1984

1986

1993

1995

2004

2013

2014

2020

Liuzhou  
United Repair  
Workshop

Guangxi first air  
compressor-4L-20/8

Liugong Air  
Compressor

Model VY-9/8  
won the Silver  
Award

The first to get  
Industry  
Production License  
in compressor  
industry

Passed ISO9001  
quality system  
certification and  
became the first  
in Guang also in  
China

Joined in  
Liugong Group

new  
generation  
portable air  
compressor

V series high pressure  
portable air  
compressor(565kw)

## 2013-2020 Participant

Building influence in  
particular application  
case in air compressor  
industry

## 2021-2025 Chinese Leading Brand

Become chinese leading  
brand among the air  
compressor brands

## 2026-2035 World Renowned Brand

Become world famous  
brand among the air  
compressor brands





# Company Philosophy

## Vision

Committed to be worldwide specialist in air compression system

## Mission

Committed to providing excellent compression system and service

## Key Value

Customer-oriented, quality achieves the future  
People-oriented, cooperation creating value



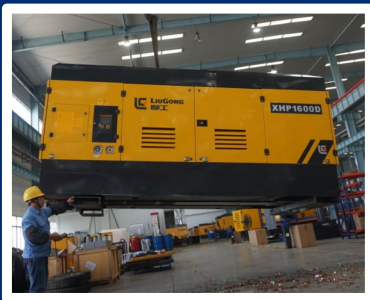
Liugong-Liugong's air compressor has got recognition in intelligent control system, outlook and quality, especially in medium and large pressure machines.



# Liugong-Your Enriching Helper

- Application and product series spectrum
- Advantages and product configuration
- Indruction of drilling rig

# 实力是最好的证明：四个“最”



## maximum Power

Maximum power: 588 kW  
Air Delivery/P.: 45 m<sup>3</sup>/min 40 bar

It's applied in oil, deep well drilling and geophysical prospecting.



## maximum Altitude

Altitude: 6000m  
Temp.: -30°C

With strong performance and highland technology, LiuGong highland air compressor can be used normally in plateau at an altitude of 6000 meters under -20 degrees.



## maximum Temperature

Applicating Temp.: -30°C-60°C

Good start-up performance under extremely condition.

**Cold:** Unique thermal preservation technology and pre-heating technology.

**Hot:** The independent air inlet system and cold & hot zoning technology



## maximum Intelligence

LiuGong E-Kon System

LiuGong self-designed E-Kon intelligent system can realize the function of information display, trouble shooting, location and track, remote control, credit control and so on.

# APPLICATION CASE



## Building Construction



## Mining/Quarry



## Photovoltaic Punching



## Water Well



## Waterway Dredging



## Slope Care



## Derusting(Ship)



## Bridge Construction



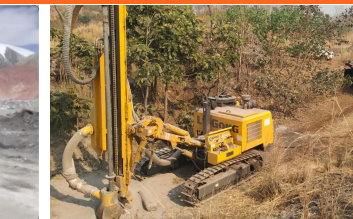
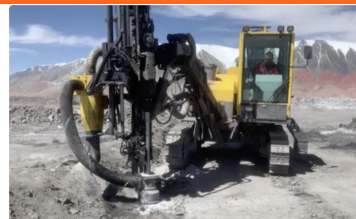
## Pressure Test (oil pipe)



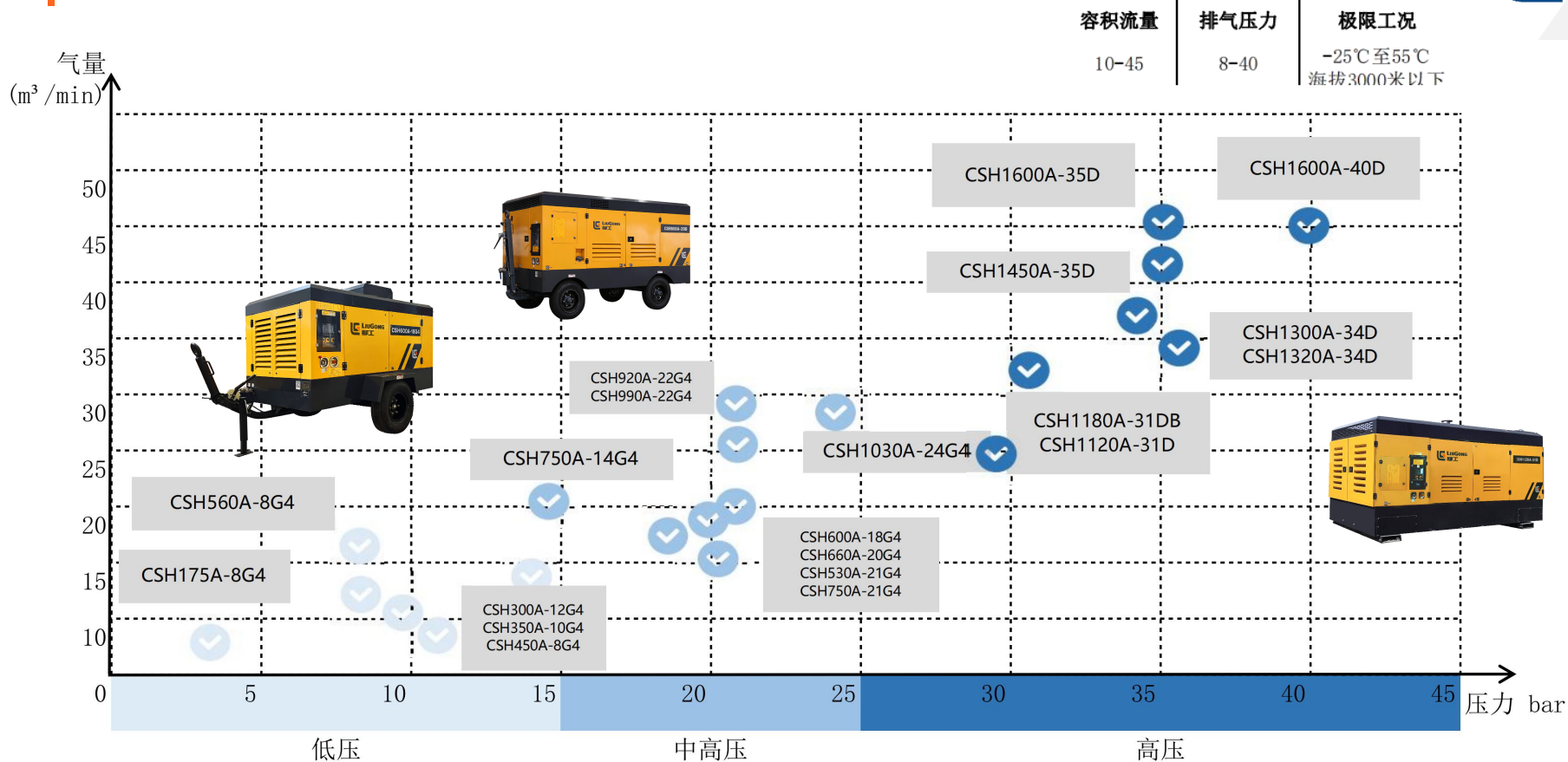
## Oil Well Drilling



## Drilling Rig



# SERIES SPECTRUM OF AIR COMPRESSOR



# ADVANTAGES OF AIR COMPRESSOR



We keep continuously innovating design and improving manufacturing process according to customer's requirements and feedbacks.

We know what customers care about:

1. Cost
2. Are air delivery and pressure strong enough?
3. Operating
4. Durable or not?
5. Safe and environmental or not ?

Liugong's air compressor can meet all aboved needs. We're comitted to provide the air compressor with lowercost, higher efficiency, easier coperating, reliable qualiry and enviromental design

**01**  
**Lower**  
**Cost**

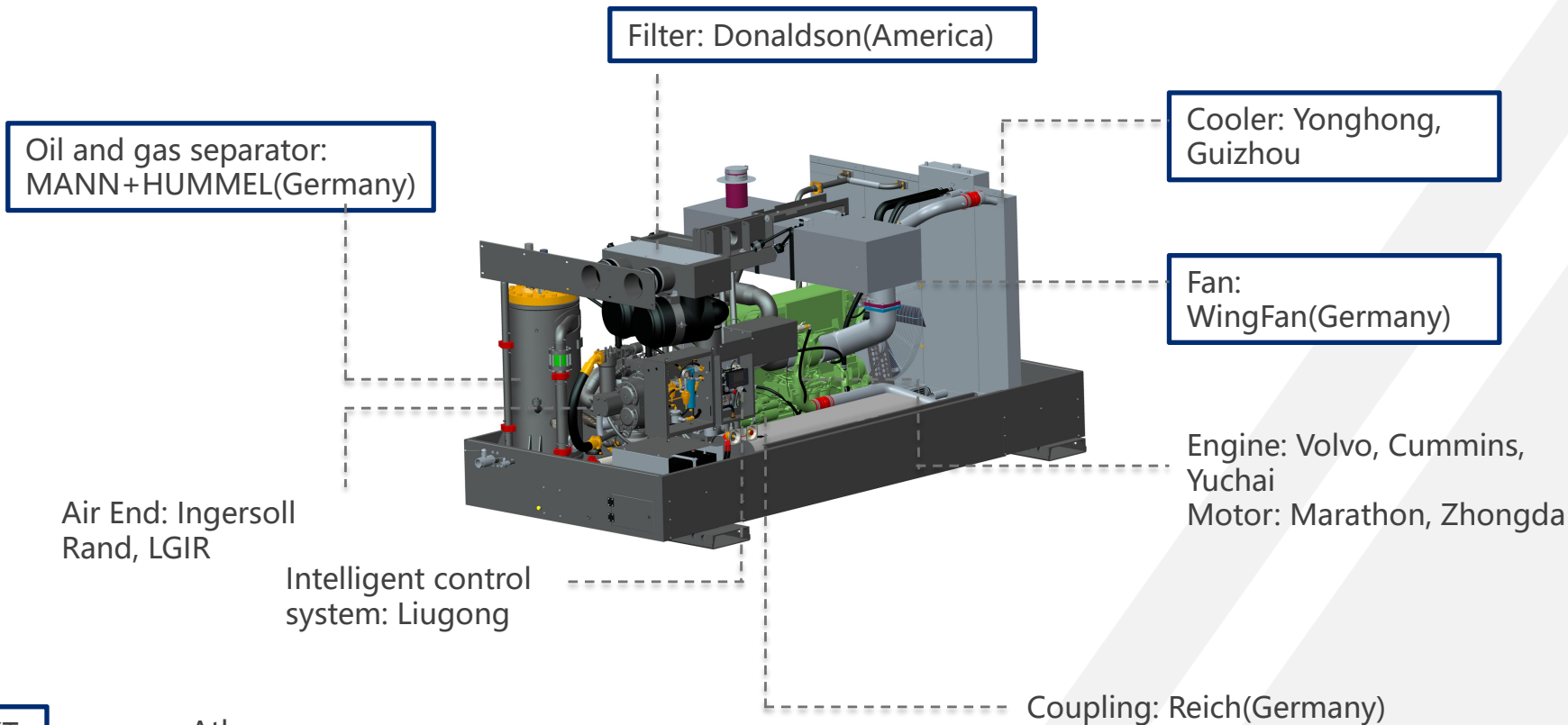
**02**  
**Higher**  
**Efficiency**

**03**  
**Easier**  
**Operating**

**04**  
**Reliable**  
**Quality**

**05**  
**environm**  
**Design**

# MAIN CONFIGURATION



TEXT

same as Atlas

## ADVANTAGE: LOWER COST



### Intelligent control system: Oil consumption reducing by 10%-15%

- Stepless speed control system

High and low pressure can be changed by one button under control system for different drilling hole size.

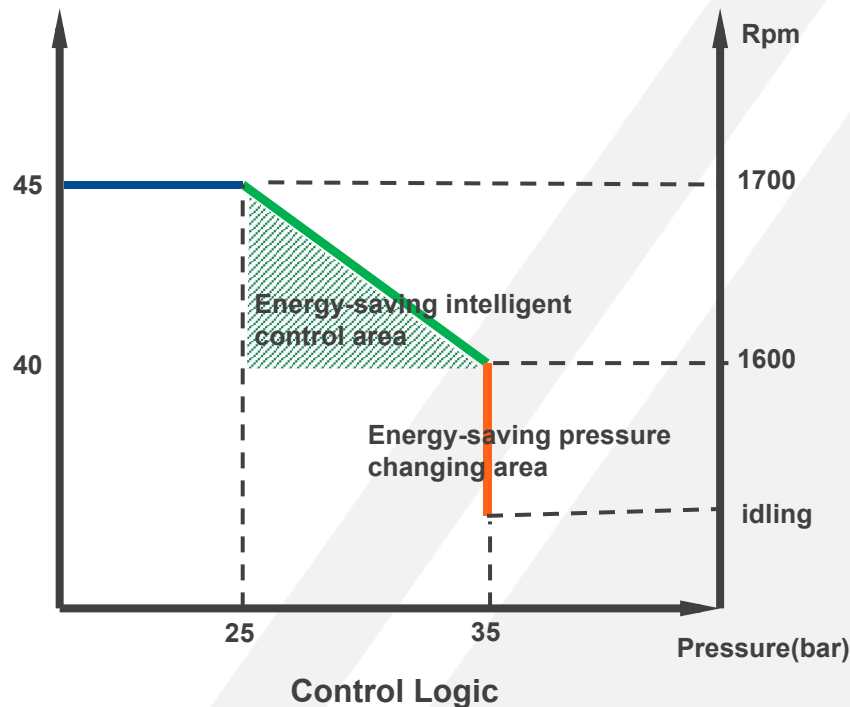
- Pressure changing design

Engine always keep in constant power cause of Liugong designed control logic system, which make air delivery and pressure always match suitable for each other.

- Low temperature fuel tank design 【Granted-patent】

No.0 diesel can be used under low temperature by this design and brings great economic benefits to customers

Air Delivery( $\text{m}^3/\text{min}$ )



Pressure is changing according to different working condition, which relise energy-saving.

# ADVANTAGE: LOWER USE COST



**Suitable size: storage and transportation costs reduce**



- **Cost saving**

Towbar can be folded and make space enough for other spare parts, which save cost for transportation and storage.

- **Time saving**

Skid-mounted: Easily moved when put within excavator and boxcar.

Wheel: Easily moved when working with drilling rig.



## Strong air output ensure efficient drilling

- **LGIR-two stage compression**

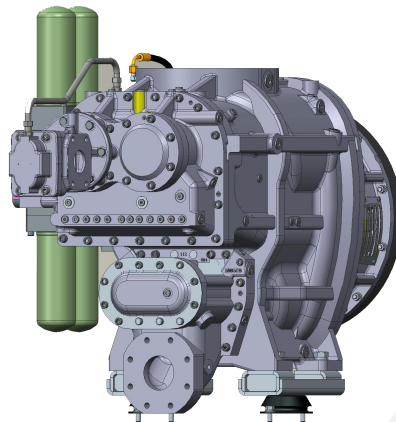
New generation profile designed air end: Compared with single compression two stage air end will be more higher efficient, which makes fewer air leakage and ensure enough pressure and air output.

- **High quality engine**

Yuchai/Cummins/Volvo: low oil consumption and strong power

- **Super size fuel tank**

Fulfill long working time requirement.



# ADVANTAGE: EASILY OPERATING



## Easily operating



- Stop and Start by one key

Start, Stop, Loading and Unloading are easily recognized and operating for operator.

- Intelligent air adjusting

Air output can be adjusted according to different working condition's requirements by intelligent system.

- Data showing easily from colorful and big screen

Colorful and big screen make you easily get working info., what's more, it can show in different language.

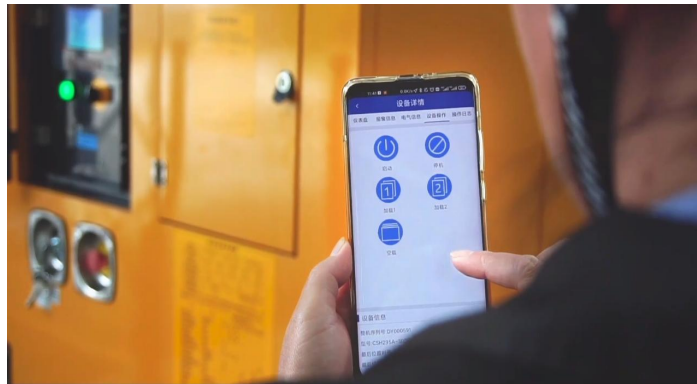


## Remote control, Keep tracking of device status

### ● Remote control system

Only 2G signal, compressors' status, location, remote locking/unlocking, remote diagnosis of machine faults and remind of maintenance can be realized by remote control system.

- ✓ Get knowing of working status anytime
- ✓ Pressure and air output matched intelligently
- ✓ Remote control, remote diagnosis of machine faults and maintenance checking can all be realized.



## Enough space for maintenance easily

- Maintenance by one position

Fuel filter, air filter oil filler and diesel filler are all in the same direction, one position can finish above maintenance which save time much.

- Air filter's maintenance is within reach

Daily maintenance of air filter is quite convenient

- Multi position makes maintenance easily

Enough space make maintenance easily and checking clearly.



# ADVANTAGE: PROVEN QUALITY



## Long service life based on stable quality

- Stable and sensitive air intake control system

Solving the problem of difficulty in low-temperature starting and failure of piston seal, which make working life longer.

- Structure is tight and solid

Solid sheet metal structure makes the machine less prone to deformation while working and transportation.

- Smart connection of gas and oil circuit.

The use of imported stainless steel connector and silicone connector reduces leakage rate.



# ADVANTAGE: RELIABLE QUALITY



## Reliable quality, Working stable



- Double-stage air filter

Efficient filtration make compressors working stable and service life extended.

- Slant upward 45° design of air input.

Large particle sand and dust can't enter which make machine working more stable.

- Incubator system 【Granted-patent】

Ensure compressor get start normally under temp. -25°C



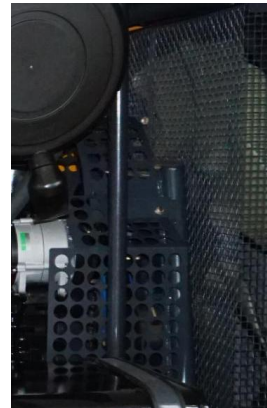
## Well protection and low noise design make safe use

- Sound insulation design make you stay away from noise

1. Sound insulation cushion is 30-50mm thick, which make working condition more healthy for operator.
2. Prevent foreign matter from entering.

- Special protection design for high temperature or high-speed working position.

Welding process of knitting protection cover is more safer than other type, cause it's not easy to happen loose weld.





# **Liugong, Provide you with a systematic solution**

Complete air compressor models help to make suitable solution according to your working condition



- ✓ **Strong strusture design**  
Integently adjusting system, Convenient maintenance, mute sounds
- ✓ **Efficiency and Energy Saving**  
E-kon system, thermal insulation, Low temperature fuel tank



		CSH175A-8G4		CSH300A-12G4	CSH350A-10G4	CSH450A-8G4	CSH560A-8G4	CSH500A-13G4	CSH600A-18G4		CSH530A-21G4		CSH660A-20G4		CSH750A-14G4		CSH1030A-24G4
COMPRESSOR	Free Air Delivery [M³/min]	5		8	10	12.5	16	14-12	17-14		15		18		21		29-25
	Pressure[Bar]	8		12	10	8	8	8-14	14-18		21		20		14		17-24
	Element	LGIR		LGIR	LGIR	LGIR	LGIR	LGIR	LGIR		LGIR		LGIR		LGIR		LGIR
	Dual transformation	Single		Single	Single	Single	Single	Single	Single		Single		Single		Single		Dual
ENGINE	Supplier	洋马	Yuchai	Yuchai	Yuchai	Yuchai	Yuchai	Yuchai	Yuchai	Cummins	Yuchai	Cummins	Yuchai	Cummins	Yuchai	Cummins	Cummins
	Power[kW]	35.9	36.8	95.6	95.6	95.6	129	129	162	173	162	173	191	194	191	194	272
	Emission levels(Standard)	Stage IV	Stage IV	Stage IV	Stage IV	Stage IV	Stage IV	Stage IV	Stage IV	Stage IV	Stage IV	Stage IV	Stage IV	Stage IV	Stage IV	Stage IV	Stage IV
UNIT	Weight [t]	0.75	0.75	1.6	1.6	1.6	1.65	1.65	2.4		2.4		2.8		2.8		4.5
	outlet×quantity	G¾×3	G¾×3	G1½×1 & G¾×1	G1½×1 & G¾×1	G1½×1 & G¾×1	G1½×1 & G¾×1	G1½×1 & G¾×1	G1½×1 & G¾×1		G1½×1 & G¾×1		G1½×1 & G¾×1		G1½×1 & G¾×1		G2×1 & G¾×1
	Noise[dB(A)]	70±3	70±3	80±3	80±3	80±3	82±3	82±3	82±3		82±3		82±3		82±3		83±3



## Africa

CSH666A-20D



## Guangdong

two units of CSH666-20D working in dusty quarry



## Jilin

Temp.: -20°C  
Rainy and snowy weather with high air humidity



## Guangxi

Hole: 115 mm  
Geology: Marble limestone



### Intelligent linkage control

While Multiple units used simultaneously,  
air output providing intelligently by E-kon  
system.



### energy conservation and environmental protection



		CSH350A-13E	CSH460A-10E	CSH580A-10E	CSH700A-8E	CSH580A-16E	CSH800A-16E	CSH660A-20E	CSH750A-14E	CSH750A-21E	CSH860A-14E	CSH1000A-17E	CSH920A-21E	CSH1080A-24E
COMPRESSOR	Free Air Delivery [M³/min]	10	13	16	20	16	23	18	21	21	24	28	26	30
	Pressure[Bar]	13	10	10	8	16	8	20	14	21	14	17	21	24
	Element	LGIR	LGIR	LGIR	LGIR	LGIR	LGIR	LGIR	LGIR	LGIR	LGIR	LGIR	LGIR	LGIR
MOTOR	Power [kW]	90	90	110	110	132	132	160	160	180	180	200	200	250
	Rated speed [rpm]	1490	1490	2980	2980	1490	2980	1490	2980	1490	2980	1490	1490	2980
	Protection/Insulation grade	IP55/F	IP55/F	IP55/F	IP55/F	IP55/F	IP55/F	IP55/F	IP55/F	IP55/F	IP55/F	IP55/F	IP55/F	IP55/F
UNIT	Weight [t]	2.2	2.2	2.2	2.2	2.2	2.2	2.8	2.8	2.8	2.8	3	3	4.5
	Outlet×quantity	G1½×1 & G¾×1	G1½×1 & G¾×1	G1½×1 & G¾×1	G1½×1 & G¾×1	G1½×1 & G¾×1	G1½×1 & G¾×1	G2×1 & G¾×1	G2×1 & G¾×1	G2×1 & G¾×1	G2×1 & G¾×1	G2×1 & G¾×1	G2×1 & G¾×1	G2×1 & G¾×1
	Noise[dB(A)]	75±3	75±3	75±3	75±3	75±3	75±3	76±3	76±3	76±3	76±3	78±6	78±6	80±3

[illegible]



## Tibet

Hole: 190 mm  
Depth: 100 m  
Altitude: 5000 m  
Temp.: -10°C



## Guangxi

Hole: 178 mm  
Depth: 200 m  
Geo.: limestone



## Hunan

Hole: 160 mm  
Depth: 350 m  
Geo.: limestone



## Fujian

Type: Hot spring well  
Depth: 500 m

- ✓ Strong strusture design  
Integently adjusting system, Convenient maintenance, mute sounds
- ✓ Efficiency and Energy Saving  
E-kon system, thermal insulation, Low temperature fuel tank



		CSH750A-21G4		CSH920A-22G4	CSH990A-22G4
COMPRESSOR	Free Air Delivery [M³/min]	21		26	28
	Pressure[Bar]	21		22	22
	Element	LGIR		LGIR	LGIR
	Dual transformation	Single		Single	Single
ENGINE	Supplier	Yuchai	Cummins	Cummins	Yuchai
	Power[kW]	191	194	272	295
	Emission levels(Standard)	Stage IV	Stage IV	Stage IV	Stage IV
UNIT	Weight [t]	2.8		4.5	4.8
	outlet×quantity	G1½×1 & G¾×1		G2×1 & G¾×1	G2×1 & G¾×1
	Overall dimensions [mm]	3200x1570x1850		3800x1800x2050	3800x1800x2050
	Overall dimensions [mm]	4450x2120x2142		4500x1800x2550	4500x1800x2550
	tire size×quantity	215-75R16C / 2		6.5-16/4	6.5-16/4
	Noise[dB(A)]	82±3		83±3	83±3



**THANK YOU**  
**谢谢**